

بِسْمِ اللَّهِ الرَّحْمَنِ الرَّحِيمِ





SWEAT GLANDS

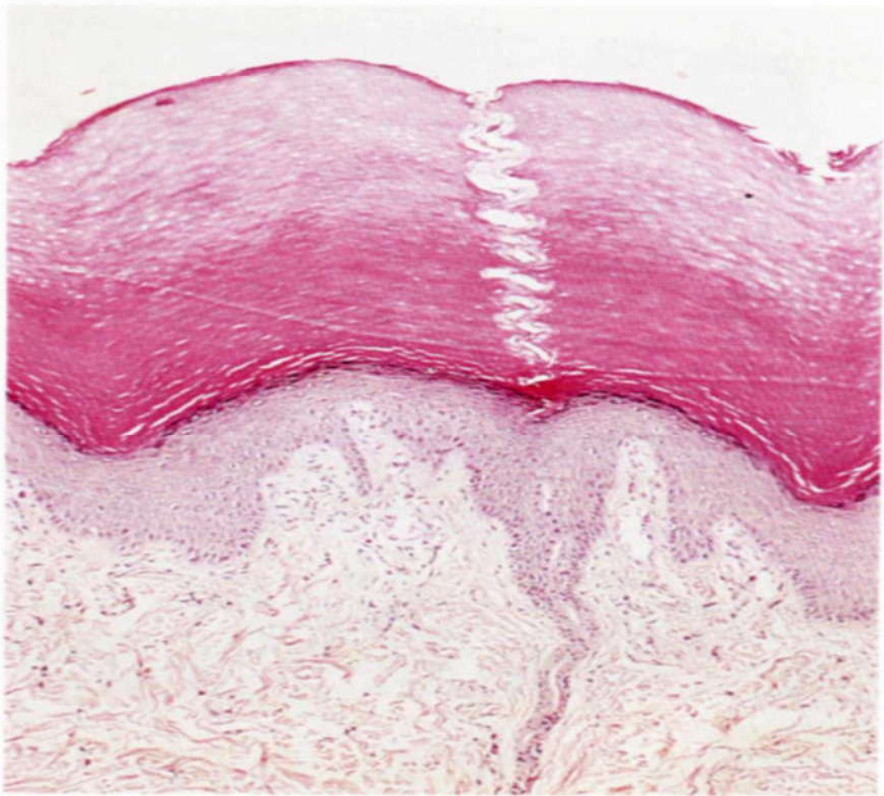
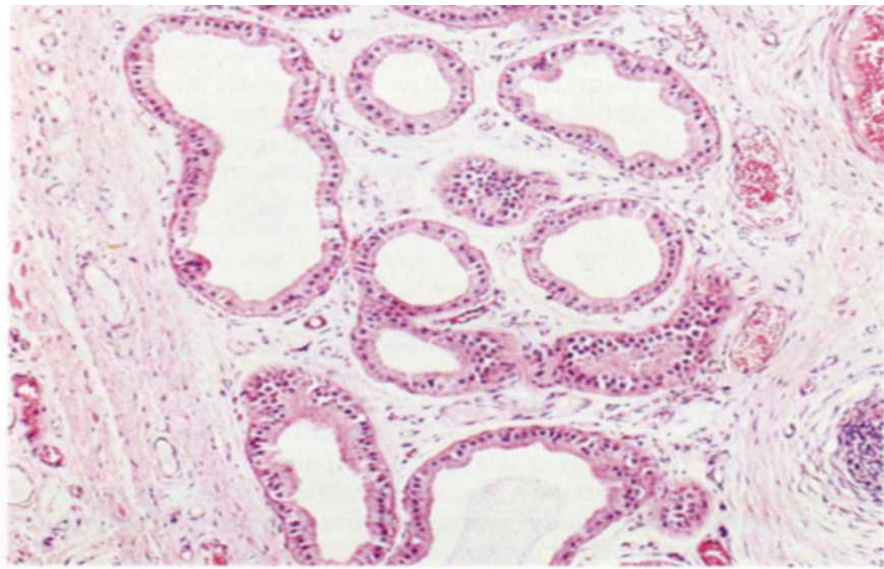
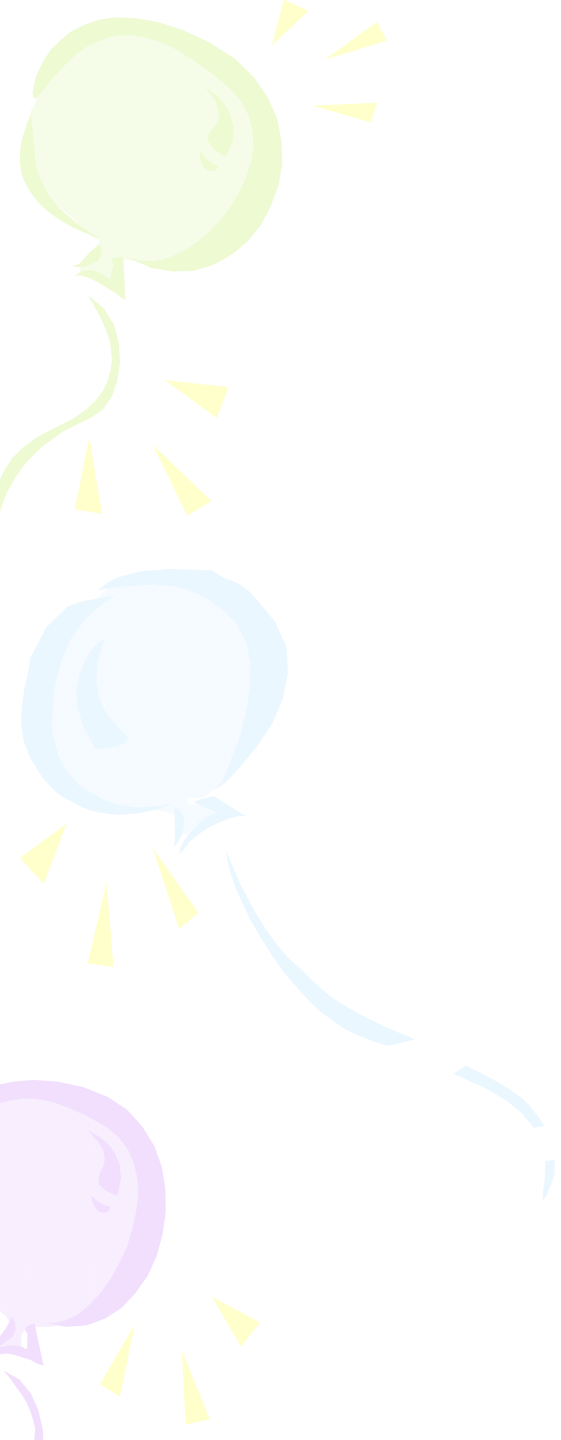
Anatomy

1. Eccrine SG:

- All over the body especially palms, soles, forehead and axilla.
- Secret sweat in response to many stimuli: heat and stress.

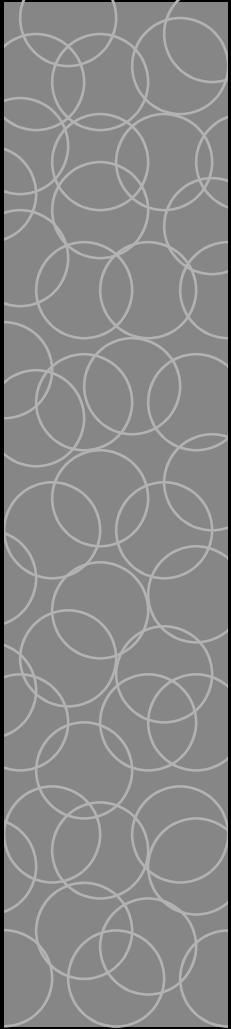

2. Apocrine SG:

- Confined to certain sites
- Functionless until puberty.
- Produce colorless, odorless secretion.
- Secretion has no function in human.



Disorders of SG:



1. MILIARIA
 2. HYPERHYDROSIS
 3. UNHYDROSIS
- 
- 

Miliaria

Def:

Skin eruption due to retention of sweat as a result of occlusion of eccrine sweat glands.

Clinical picture:

- In hot humid climate
- In infants and children
- In the areas of friction with clothes and flexures.
- Intense discomfort and pricking sensation.

The lesion depend on the level of obstruction:

1. **Miliaria crystallina**: very small vesicles in very large number.
2. **Miliaria rubra**: erythematous papular lesions. May be pustules.
3. **Miliaria profunda**: larger papules and pustules.



DOIA

(c) University Erlangen
Department of Dermatology
Phone: (+49) 9131 - 85 - 2727



(c) University Erlangen,
Department of Dermatology
Phone: (+49) 9131 - 85 - 2727



(c) University Erlangen,
Department of Dermatology
Phone: (+49) 9131-85-2727



Treatment:

1. Cool environment
2. Soothing applications
3. Avoid irritants
4. Antihistaminics and antibiotics

The image features a decorative background. In the top-left corner, there is a light green square. A dark blue horizontal bar with rounded ends spans across the middle of the image, passing behind the text.

THANK YOU